

# AN INHABITED JOURNEY

Architects' interviews and housing portraits throughout the world.



PARTNERSHIP FILE

EMMANUEL DEQUIDT & MAUD GOBILLIARD -Architects

2015 / 2016

[www.levoyagehabite.com](http://www.levoyagehabite.com)



# THE INHABITED JOURNEY

A 10 MONTHS' JOURNEY IN ASIA AND SOUTH AMERICA, MEETING ARCHITECTS AND DISCOVERING VERNACULAR AND CONTEMPORARY HOUSING.



The inhabited Journey in a few words :

**Who** : Emmanuel Dequidt and Maud Gobilliard, two young architects with different experiences about accommodation and trying to develop new points of view in architecture and their professional work.

**Where** : In Asia and South America, in developing and changing countries: Kyrgyzstan, India, Nepal, Vietnam, Laos, Cambodia, Colombia, Peru, Bolivia.

**What** : A project of explorations, discoveries, encounters and exchanges about housing conditions throughout the world. Reports on different typologies of housing and ways of living, interviews of professionals experimenting a contemporary and local architecture and developing a humane, social, and sustainable work.

**How** : During our journey, we'll interview local architects and inhabitants, we'll make a photographic report and housing surveys. When we come back, we'll create a website, write a book and prepare exhibitions.

**When** : From September 2015 to May 2016, visiting a country a month.

27 YEARS OLD



DIPLOMAT  
SELF-WILLED

ARCHITECT

## EMMANUEL DEQUIDT

*Age* : 27 years old

*Born in* : Brest (France)

*Job* : Architect

*Particularity* : Has a dry sense of humor

*Like* : Eating / Cooking / Laughing / Exploring

*Doesn't like* : Jokes about Brittany

*Dream* : A great journey

*Qualities*: Diplomat – self-willed

*Flaws* : Stubborn

### Housing Experiences

- 2012 – 588 collective flats  
to – 130 flats in social residency
- 2015 – 80 students' dormitories
- 32 single houses
  - 24 intermediate housings
  - 20 rooms in a nursing home
  - 20 flats in a center for asylum seekers
  - 1 house renovation
  - 1 house extension

Out of a total of 15 operations. Working as project manager at *Margot-Duclot architectes associés* and as project assistant at *MXC architectes*.

### 2010 Photography

Publication of pictures in the book «Nouveau(x)» published by Dilecta

### Formation

- 2013 *Ensa Paris la Villette (school of architecture)*  
Certificate giving the authorization to exercise architecture under its own name
- 2011 *Ensa Nantes (school of architecture)*  
Final diploma of architecture Congratulations of the jury
- 2009 *ISURU (Urbanism Architecture school), Brussels*
- 2010 Evening lessons of urbanism
- 2009 *ISA (school of architecture)*
- 2010 Erasmus in Belgium, Brussels

896  
HOUSING

15  
OPERATIONS

### Shared Experiences

- 2013 *Housing experiences*  
to - 28 modular housing for emergency accommodation
- 2015
- 2 single houses
  - 1 house extension
  - 1 flat rearrangement
  - 1 house renovation

# THE VOYAGERS

## MAUD GOBILLIARD

*Age* : 28 years old  
*Born in* : Béziers (France)  
*Job* : Architect  
*Particularity* : Not very tall  
*Like* : Travelling / Cooking / Dancing / Taking pictures  
*Doesn't like* : Rain / Brussels sprouts  
*Dream* : A great journey  
*Qualities* : Strong-willed, ingenious  
*Flaws* : Anxious

28 YEARS OLD

INGENIOUS  
STRONG-WILLED



ARCHITECT

### Formation

- 2013 *Ensa Paris la Villette (school of architecture)*  
Certificate giving the authorization to exercise architecture under its own name
- 2011 *Ensa Nantes (school of architecture)*  
Final diploma of architecture Congratulations of the jury
- 2010 *Laua (Research department)*
- 2011 Research works : Meeting Roma people, activist and local workers
- 2008 *Tul (Technical university of Liberec)*
- 2009 Erasmus in Czech republic

### Housing Experiences

- 2011 – 223 collective flats
  - a – 130 flats in social residency
- 2015 – 22 intermediate housing
  - 16 single houses
  - 8 house renovations
  - 4 modular flats
  - 3 flat rearrangements
  - 2 house heightening
  - 2 house extensions.

Out of a total of 14 operations. Working as project manager at *Zoomfactor architects* and as project assistant at *Berranger&Vincent . Vincent.*

290  
HOUSING

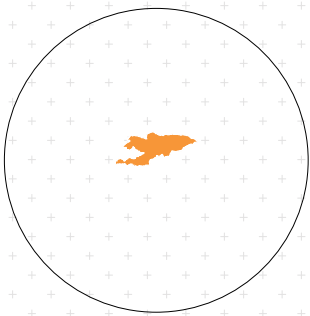
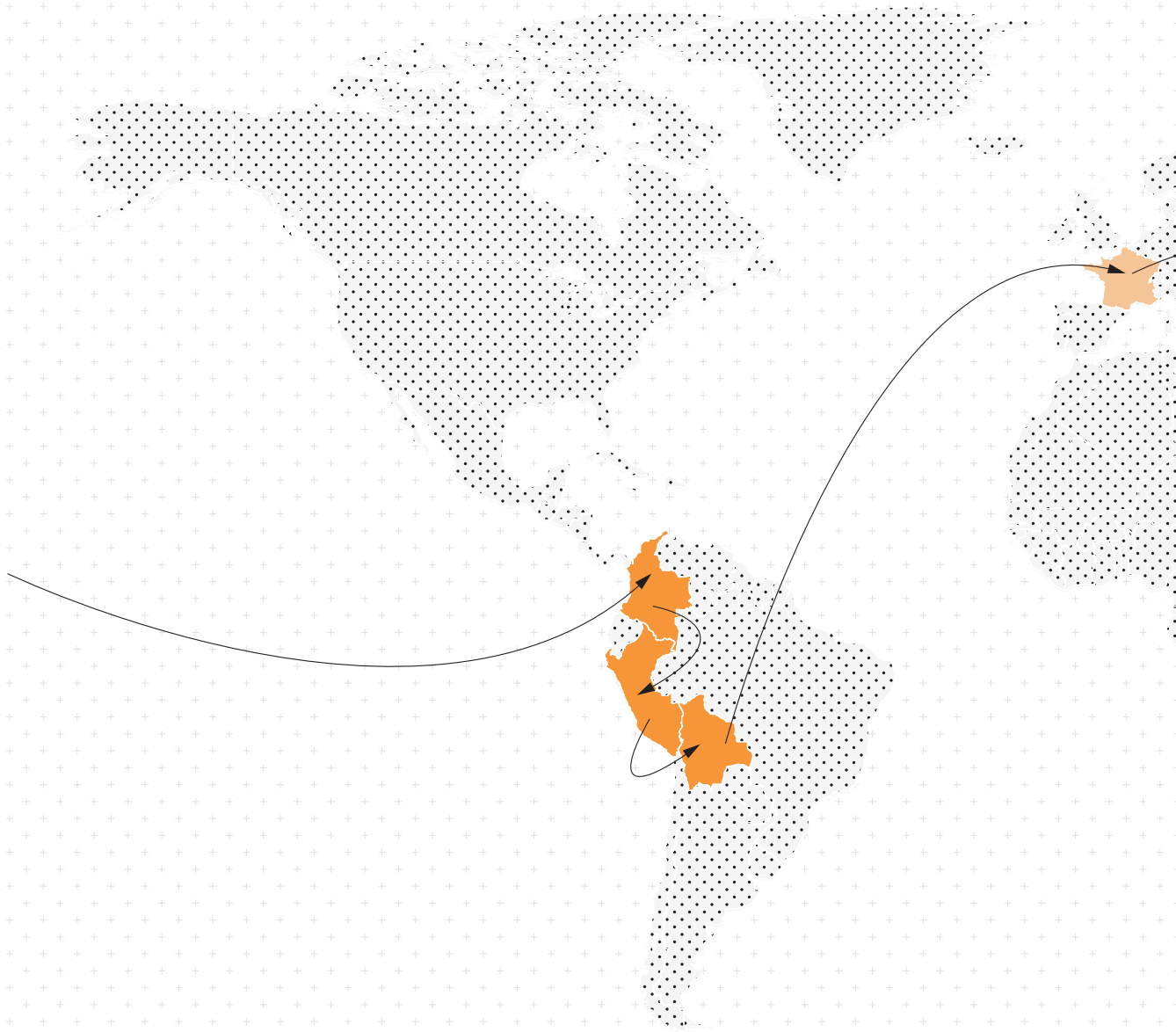
14  
OPERATIONS

### Shared Experiences

*Journeys perform* : Germany / England / Austria / Belgium / / Bosnia Herzegovina / Canada / Croatia / Scotland / Spain / USA / Hungary / Italia / Ireland / Morocco / Mexico / Netherlands / Czech republic / Romania / Poland / Senegal / Serbia / Slovakia / Slovenia / Sweden / Swiss / Turkey

- 2012 *Teacher ENSAN (school of architecture)*
- 2014 project workshop « *drawing dreams* »  
project workshop « *an holistic approach of housing* »

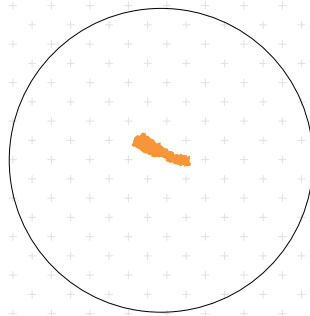
- 2010 *Member of the Association Soleil Rom in Sainte Luce (France)*
- 2012 *Luce (France)*  
Association working for the integration of 10 Roma families in Sainte Luce (France).  
Lessons of french for the children and the adults



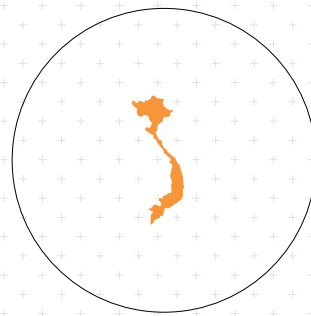
**KYRGYZSTAN**  
26/08/15 - 27/09/15



**INDIA**  
28/09/15 - 08/11/15



**NEPAL**  
09/11/15 - 06/12/15

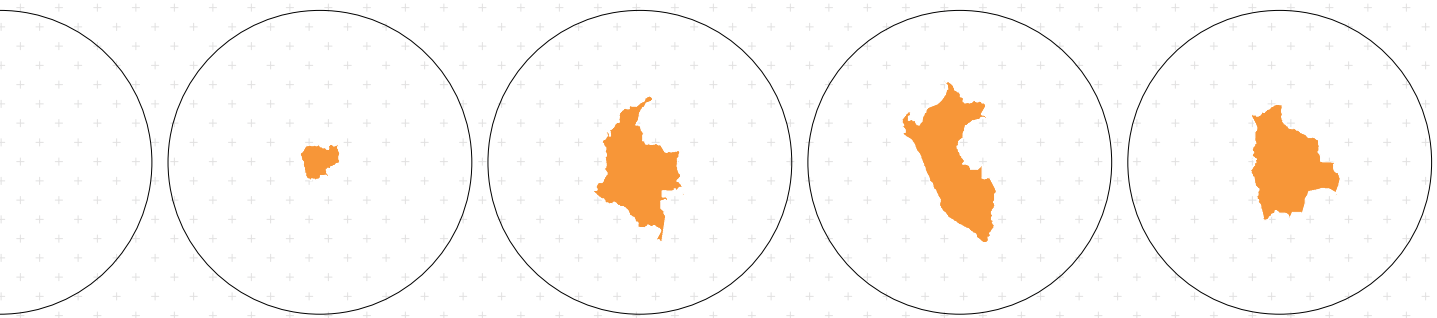
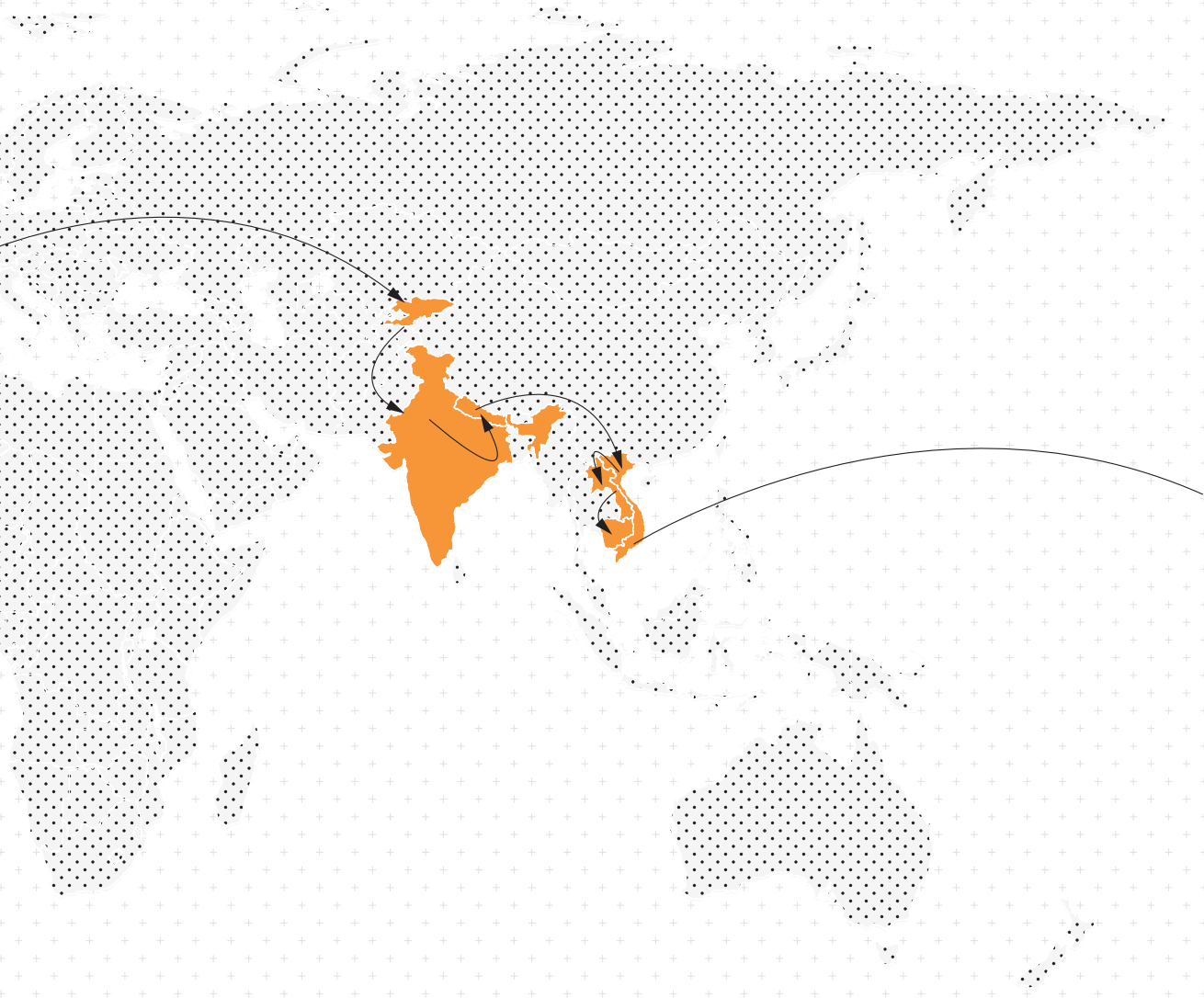


**VIETNAM**  
07/12/15 - 03/01/16



**LAOS**  
04/01/16

# ITINERARY



OS  
- 31/01/16

**CAMBODIA**  
01/02/16 - 28/02/16

**COLOMBIA**  
29/02/16 - 27/03/16

**PERU**  
28/03/16 - 30/04/16

**BOLIVIA**  
01/04/16 - 20/05/16





# SPOKEPERSONS BY COUNTRY



## Contacts

**Union of Architects of Kyrgyz Republic**  
Bishkek

**Forum urban**  
Bishkek  
[www.forum.urban.kg](http://www.forum.urban.kg)



## Contacts

**Raj Rewal Associates**  
New-Delhi  
[www.rajrewal.in](http://www.rajrewal.in)

**Romi Khosla design studios**  
New-Delhi  
[www.rk-ds.com](http://www.rk-ds.com)

**Anagram architects**  
New-Delhi  
[www.anagramarchitects.com](http://www.anagramarchitects.com)

**Rural Housing Knowledge Network**  
New-Delhi  
[www.ruralhousingnetwork.in](http://www.ruralhousingnetwork.in)



NEPAL



VIETNAM

## Contacts

### Society of Nepalese Architects

Katmandou

<http://sona.org.np/>

### Puri Rabindra Architect

Katmandou

[www.rabindra.com.np](http://www.rabindra.com.np)

### Prabal Thapa Architects

Katmandou

[www.prabalthapaarchitects.com.np](http://www.prabalthapaarchitects.com.np)

### Lumanti

Katmandou

<http://lumanti.org.np/cms/>

### ABARI

Lanku

<http://abari.org/>

## Contacts

### A21studio

Ho Chi Minh City

[www.a21studio.com.vn/](http://www.a21studio.com.vn/)

### Vo Trong Nghia

Ho Chi Minh City & Hanoi

<http://votrongnghia.com/>

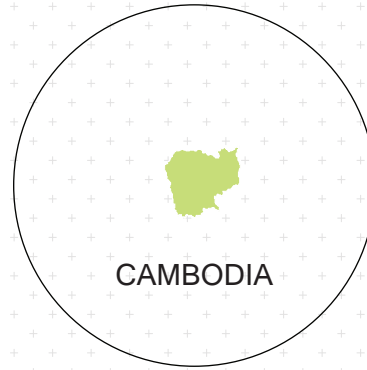
### HPA

Hanoi

[www.hpa.vn](http://www.hpa.vn)



LAOS



CAMBODIA

## Contacts

**CAN (Community architects Network)**  
<http://communityarchitectsnetwork.info>

**Asian Coalition for Housing Rights**  
[www.achr.net](http://www.achr.net)

**Building Trust**  
<http://www.buildingtrustinternational.org/>

## Contacts

**Collective Studio**  
Phnom Penh  
<http://www.collectivestudio.cc/work/>

**Stuart Cochlin Architects**  
Siemp Reap  
Stuart-Cochlin-Architects - facebook

**Little Dream**  
[www.littledream.org/](http://www.littledream.org/)



COLOMBIA



PERU

## Contacts

### Oficina informal

Bogota

<http://oficinainformal.com/>

### Plan B

Medelin

<http://www.planbarquitectura.com>

### Daniel feldman

Bogota

<http://divisare.com/projects/272781-Daniel-Joseph-Feldman-Mowerman-Ivan-Dario-Qui-ones-Sanchez-Centro-de-Desarrollo-Infantil-el-Guadual>

### Fundacion tierra viva

<http://fundaciontierraviva.org/>

## Contacts

### Barclay Crousse

Lima

[www.barclaycrousse.com/](http://www.barclaycrousse.com/)

### Cotidiano

Lima

<http://www.cotidiano.pe/>

### Afonso Maccaglia Architecture

Lima

[www.archdaily.com/579909/school-in-chuquibambilla-ama-bosch-arquitectos/](http://www.archdaily.com/579909/school-in-chuquibambilla-ama-bosch-arquitectos/)

### Ilona Zamora

Lima

<http://ilonazamora.com/>



## **Contacts**

**Sommet**

Santa Cruz

<http://www.sommet.com.bo/site/>

**Plan misiones**

Santa Cruz

<http://www.planmisiones.org/>

**Freddy Mamani Silvestre**

El Alto

[http://issuu.com/gatta/docs/la\\_arquitectura\\_de\\_freddy\\_mamani\\_si](http://issuu.com/gatta/docs/la_arquitectura_de_freddy_mamani_si)



henji Made In Alps



ORDRE DES  
ARCHITECTES

MARGOT  
-  
DUCLOT  
ARCHITECTES  
ASSOCIÉS

ZOOMFACTOR  
ARCHITECTES

iHealth



ABM  
aventure du bout du monde



KILKELLY  
Geo-Spatial  
Solutions



collectif Fil

# PARTNERSHIP

## BECOMING A PARTNER OF THE PROJECT

### 2 KIND OF PARTNERSHIP



#### CULTURAL PARTNER

The cultural partner supports the ideas, the initiative and the value of the project.

It offers a new visibility to the project and broadcast information, news about it on the web or on printed documents. It can offer exhibition spaces too.

#### Why becoming our cultural partner?

- To improve your commitment on responsible housing and to defend a social, human and sustainable architecture.
- To have a new opportunity of visibility for your company.
- To present the project, the journey to your associates, your partners

#### How to become our cultural partner?

You can help us by supporting the organization and development of our project.

- Making a link to our project on your website
- Communicating on the project
- Providing locations for futur exhibitions



#### LOGISTIC PARTNER

A logistic partner, in addition of supporting the project's ideas, helps making it real.

He gives a financial or logistic help to the project.

#### Why becoming our logistic partner?

- To emphasize your commitment on responsible housing and to defend a social, human and sustainable architecture.
- To have a new opportunity of visibility for your company
- To try and test your products in various situations
- To develop new institutional contacts in the world
- To have new communication formats using our picture and interviews

#### How to become our logistic partner?

You can help us by :

- Giving us a financial support, sponsoring us
- Lending us some equipment
- Making a link to our project on your website communicating on project
- Providing locations for futur exhibitions





# APPROACH I

## DETAILED PERSONAL PRÉSENTATION

2  
ARCHITECTS

SUSTAINABLE  
ARCHITECTURE

HUMANE AND  
SOCIALE  
ARCHITECTURE

As young architects we spontaneously worked on accommodations. We have developed our work on different aspects from the individual house to group or intermediate housing, including urgent and social housing.

Always questioning our trade, we are now willing to explore what is, for us, the basis of architecture: housing.

Studying housing will allow us to think about some fundamental questions in order to understand the different changes in our society.

This questioning could go from public and political consideration related to master planning and economic development to more intimate questions such as the different ways of living through the world. Thinking about how to house people requires a reflection on many levels: the diversity of ways of living, the multitude of landscapes and geographical situations and their evolutions.

We define our architectural commitment as a social, humane and sustainable approach.

Human and social, because architecture and moreover housing is a human right for us, people's use and will is essential to create equipment of quality. And those ideas should not be stopped by economical obstacles. Sustainable, because projects should always be in adequacy with the environment, the landscape, the culture and the different local resources.





# APPROACH II

## DETAILED PRESENTATION OF THE JOURNEY

27 ARCHITECTS  
& ASSOCIATIONS

A 10 MONTHS'  
JOURNEY

MEETING  
EXCHANGES  
INTERVIEWS

9 COUNTRIES &  
2 CONTINENTS

Our journey is an opportunity to develop and enlarge our knowledge and thinking on architecture and more particularly on living accommodations.

Our aim is to meet architects, inhabitants, and various housing in the world to create portraits of settlements. We'll gather all these portraits in a book, on a website and through various exhibitions offering an exhaustive vision of the different places we'll visit and increasing the public awareness of the architecture and various landscapes discovered during our trip.

Our itinerary will take us to Kyrgyzstan, India, Nepal, Vietnam, Laos, Cambodia, Colombia, Peru and Bolivia. We would like to focus on countries known as "developing", having in common expanding cities and changing landscapes.

We would like to discover what effects those changes have on housing, the ways of living of the inhabitants and the architectural creations.

We'll interview architects experimenting a contemporary architecture, using local resources and working in adequacy with the identity and particularities of their territory.

In every country and region we'll visit, we'll try to highlight contextualized housings, evolving or not through time, but not the ones that globalization has made monotonous and uniform.





# APPROACH III

## DETAILED PRESENTATION OF THE PORTRAIT BOOK

PHOTOS  
SURVEYS  
REPORTS

INHABITANTS  
PORTRAITS

ARCHITECTS  
PORTRAITS

HOUSING  
PORTRAITS

We have gathered documentation on countries we will be going through in order to fulfill our portrait book. We have made contact with associations and local architects so that we could meet them in their country.

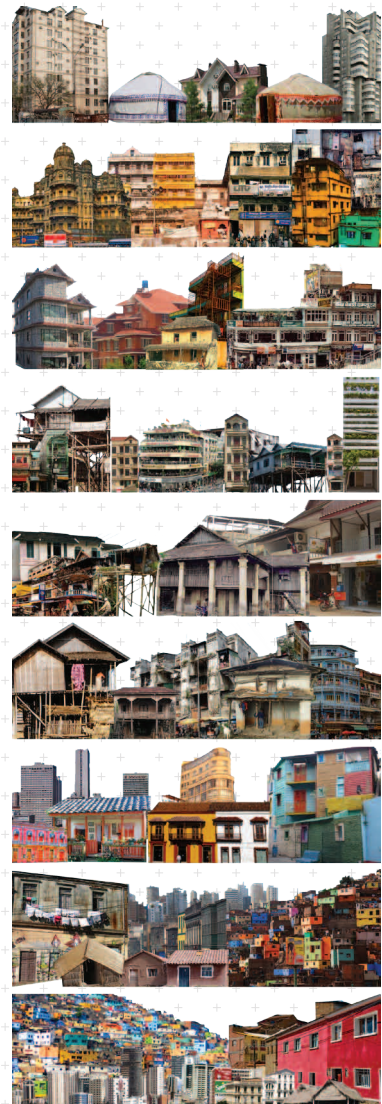
We have finalized a working method that we'll apply during the journey, based on observation, architectural survey and drawing and on recorded testimonies.

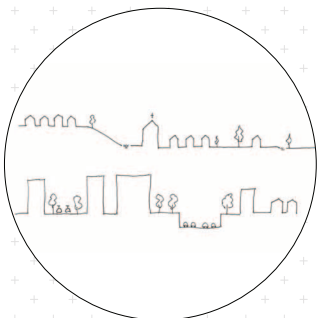
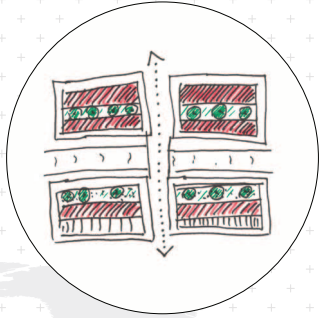
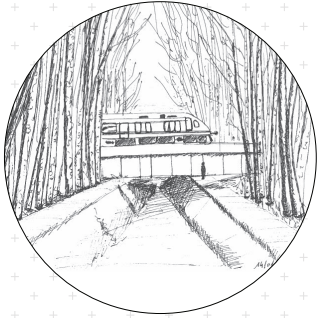
It will be work in motion and roaming. With this process we will test while travelling in these different countries, we will be able to make different types of observations and real comparisons in order to draw portraits of the inhabitants and their housings as close to reality as possible.

We will use the same type of format and criteria for a better comparison and understanding.

We will collect photos, drawing surveys, diagrams, plans as well as interview transcriptions to make these portraits. In the end, our aim is to make a web site and write a book.

We also wish to create an exhibition to account for our work. The inhabited journey is an open project. We hope it can be enriched by other observations and analysis with the help of various partnerships and other new trips.





# APPROACH IV

## HOUSING PORTRAITS, METHOD OF EXPLORATION

### Housing portraits

Our exploring approach is based on three scales, which will guide our journey and exchange through the world.

Our tools will be photography, sketches and interviews to create our portraits.



### Territory scale

A way to understand geography (topography, hydrography, climate) and cultural identity of the area.

- Presentation texts
- Maps with outstanding points
- Sections



### City, village, district scale

It's the analysis of the neighborhood close to the housing and its link with its environment, social and morphologic influences.

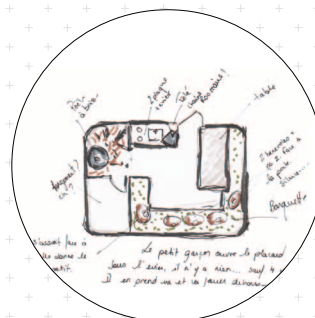
- Build spaces
- Section / height / thickness / scheme
- Link with the street / privacy
- Facades
- Walker's view
- Different floor plan
- Link between entrance and street
- Relation between private and public spaces

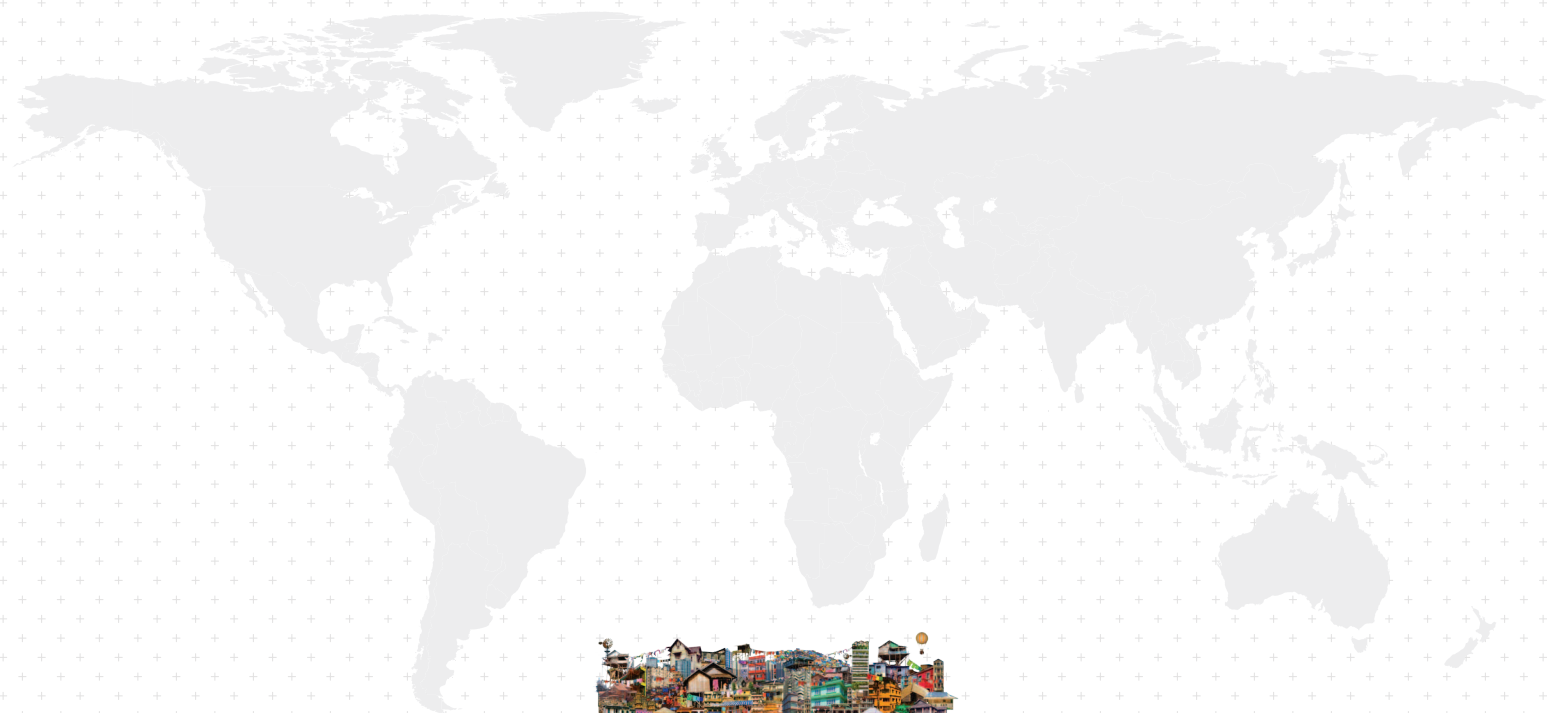


### Housing scale

It's the observation of the house / flat itself: its organization, dimension, materials, its inhabitants.

- Scheme of uses
- Pictures
- View from the outside / view to the outside
- Plan / organisation / circulation / orientation





To contact us or to have further informations:

**An Inhabited Journey**  
[levoyagehabite@gmail.com](mailto:levoyagehabite@gmail.com)

**Maud Gobilliard**  
+33 679596432

**Emmanuel Dequidt**  
+33 650920258

[www.levoyagehabite.com](http://www.levoyagehabite.com)